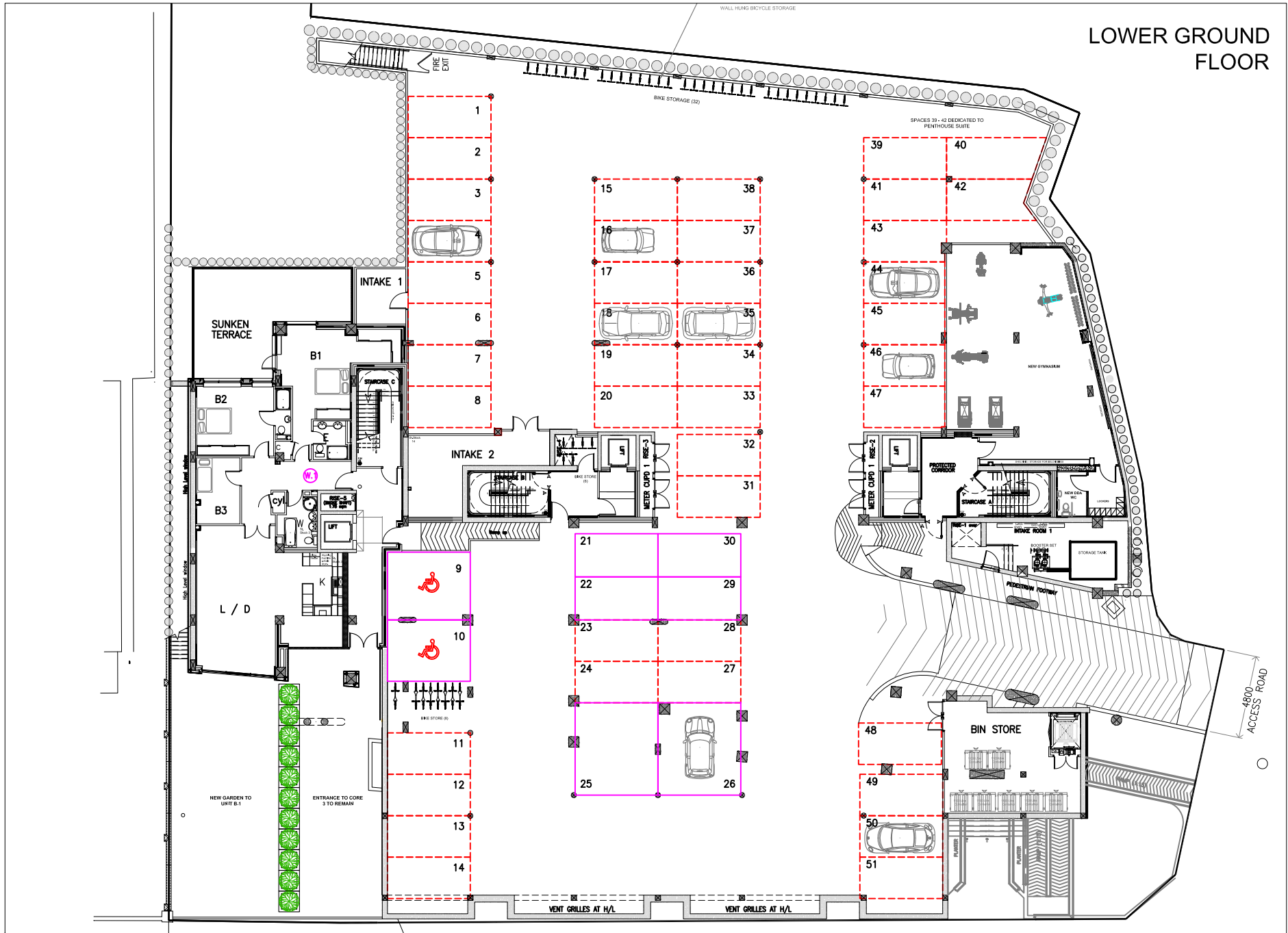


**SITE PLAN**  
1:2500 @A3



**TOTAL PROPOSED  
CAR SPACES = 67**

ThirdWay

© Copyright

Copyright of this drawing belongs to & is vested in THIRDWAY INTERIORS and may not be reproduced or without written consent by THIRDWAY INTERIORS. Any persons, firm or company unlawfully reproducing or distributing this drawing or in any way infringing the copyright therein will be prosecuted.

This document is the property of THIRDWAY INTERIORS. Copyright is reserved by them, and the drawing is issued on the condition that it is not copied, reproduced or retained by, nor disclosed to any unauthorised person, either wholly or in part, without the consent in writing from THIRDWAY INTERIORS.

Drawing Approval

Client Signature	
Printed Name	
ThirdWay Signature	
Date	
Specification Ref	

Status

- Preliminary/Info.
- Contract
- Planning
- Construction
- As-Built
- Building Control

Revision Detail

Rev	Detail	By	Date
A	INFORMATION	DJ	17.02.16
B	PLANNING UPDATE	RG	22.02.16

PLANNING DRAWING

Client  
THE SHORE

Project Title  
22-23 THE LEAS  
WESTCLIFF-ON-SEA  
ESSEX  
SS0 8FF

Drawing Title  
CAR PARKING  
PROPOSED ARRANGEMENT  
PLANNING DRAWING

Date: 17.02.16 Drawn By: DJ

Scale: 1:300@A3 Rev: B

Drawing No: TWI-1250-AF-D131

ThirdWay  
ThirdWay Interiors Ltd  
2nd Floor 3-5 Bleeding Heart Yard  
London EC1N 8SJ